



M&S hose connections are used for the transition from pipes to flexible hose lines. They are equipped with a variable process connection consisting of a pipe connection from the M&S range and a hose nozzle for integrating the hose.

Depending on the operational requirements, the operating conditions and the hygienic demand, a suitable and appropriate design of the hose connection must be selected.

Variations of hose connections

Collar hose nozzle DIN11864-1



Hose fixation with half shells or clamping sleeve

Usage

Features

Versions

- For transition from rigid pipelines to flexible hose lines:
 - * As connection of hoses to tank trucks or mobile pumps.
 - * To compensate vibrations and decouple rigid connections, e.g. for apparatus and containers on load cells.

Usage

Features

Versions

- Simple to high hygienic requirements (depending on process connection and hose integration).
 - * Hose connection force-locked with pressing sleeve.
 - ◆ For normal hygienic requirements.
 - ◆ Slightly reduced passage.
 - ◆ Very secure hose connection (hydraulic crimping only by specialist dealers).
 - * Hose nozzle with half-shells force-locked.
 - ◆ For simple hygienic requirements.
 - ◆ Reduced passage.
 - ◆ Safe hose binding (mechanical on-site pressing by specialist personnel).
 - * Hose nozzle with hose clamp force-locked.
 - ◆ Reduced passage.
 - ◆ No hygienic requirements.
 - ◆ Simple hose binding.



Usage

Features

Versions

Different applications, products and processes in various industries ensure a wide range of hose designs and corresponding connection parts. M&S manufactures a large part of this extensive range of hose connections. In addition to the standard designs, many other variants are produced, also according to customer specifications.

Hose connectors are available in smooth, scaled or beaded design:

- Hose nozzles with safety collar according to EN 14420 and connection with pipe connection according to DIN 11864 (long) and DIN 11853 (short) (figure 1: hose nozzle smooth with liner DIN 11864-1)
 - * Sizes
 - ◆ Process connection DN 15 - DN 100
 - ◆ Nozzle for hose 13 mm - 100 mm inside diameter, other sizes or size ranges e.g. Inch and ISO as well as nozzles for other hose sizes are available.
 - * Materials
 - ◆ 1.4404, optional 1.4435
 - ◆ Other stainless steels, titanium or hastelloy
 - * Surfaces
 - ◆ Inside and outside classified in different hygienic classes.
- Hose nozzles with safety collar according to EN 14420 and connection with pipe connection according to DIN 11851 or DIN 32676 (figure 2: hose-clamp-nozzle)
 - * Sizes
 - ◆ Process connection DN 15 - DN 100
 - ◆ Nozzle for hose 13 mm - 100 mm inside diameter,
 - ◆ Other sizes or size ranges e.g. Inch and ISO as well as nozzles for other hose sizes are available.
 - * Materials
 - ◆ 1.4404, optional 1.4435
 - ◆ Other stainless steels, titanium or hastelloy
 - * Surfaces
 - ◆ Inside and outside with different surface qualities.
- Hose nozzles without safety collar according to EN 14420 and connection with pipe connection according to DIN 11851 or DIN 32676 (figure 3: hose-liner)
 - * Sizes
 - ◆ Process connection DN 10 - DN 100
 - ◆ Nozzle for hose 13 mm - 100 mm inside diameter
 - * Materials
 - ◆ 1.4404/AISI 316L, 1.4307/AISI 304L
 - * Surfaces
 - ◆ Inside and outside with different surface qualities.

Fig. 1

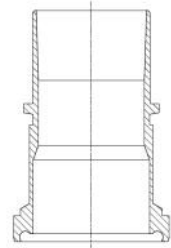


Fig. 2

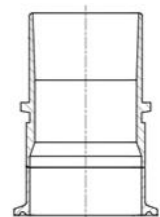


Fig. 3

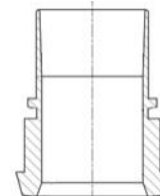
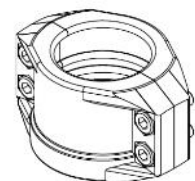


Fig. 4



Pressing sleeves, shells und clamping jaws according to EN 14420 for safe and tight connection of suitable hoses. (figure 4: pair of clamping jaws)

- * Pressing sleeves for professional binding
- * Shells and clamping jaws for on-site binding