



The CS-Connector is a hygienic weld-in connection for containers that ensures a dead space-free and easy-to-clean process interface. It is suitable for a wide range of applications, from safety devices such as safety and vacuum valves to process measurement technology, cleaning systems, sight glasses, and pipe connections.

With a pressure resistance of up to PN16 and an integrated leak hole for rapid detection of seal faults, the connector makes a significant contribution to process hygiene and operational safety.

The components are made from forged raw material and are characterized by high strength, durability, and maximum operational safety.

CS-Connector weld-in flange

medium-contact inner surface



Fig. 1



Fig. 2

Usage

Features

Versions

The CS-Connector ensures hygienic connection of:

- **Pipelines** (for filling, gassing, emptying, or transferring media);
- **Safety devices** (safety and vacuum valves);
- **Measuring technology** (pressure, temperature, or level sensors, cleaning monitoring);
- **CIP/SIP heads** (spray balls, rotating and targeted jet cleaners);
- **Sampling valves** (for hygienic product sampling);
- **Sight glasses** (for visual inspection).

Usage

Features

Versions

- Universal connection standard suitable for numerous process tasks;
- Robust design – no distortion and so no reworking necessary after welding;
- Connection option for DIN 32676 (clamp connections), DIN 11864 (aseptic applications), and DIN11853 (hygienic applications);
- Flexible connection with half-shell flanges for subsequent attachment of pipelines, measuring or other components;
- Integrated leak hole for quick detection of seal faults;
- Dead space-free design with smooth inner contour, fully CIP/SIP-compliant;
- High pressure resistance up to PN16.



Usage

Features

Versions

- Sealing concept
 - * O-ring in accordance with DIN 11864 / DIN 11853
 - * Molded seal in accordance with DIN 32676 (Fig.3)
- Sizes
 - * Connection sizes from DN25 to DN150
 - * Suitable radii for tank and container geometries from R200 mm to R2000 mm
 - * Dimensions in accordance with
 - ◆ DIN 11864 (series A, C)
 - ◆ DIN 11853 (series A, C)
 - ◆ DIN 32676 (series A, C)
- Connections
 - * Flange and clamp connections according to DIN 11864
 - * Flange and clamp connections according to DIN 11853
 - * Clamp connections according to DIN 32676
- Permissible pressure
 - * DN25-150: 16 bar
- Materials
 - * Standard: 1.4404/316L
 - * Optional other stainless steels, titanium, or Hastelloy
 - * FDA-compliant seals: VMQ, EPDM, HNBR, FKM
- Surfaces
 - * Hygiene class: H3
 - Inner surface: $Ra \leq 0.8 \mu m$
 - Outer surface: $Ra \leq 1.0 \mu m$
- Certification & documentation
 - * Certificates of conformity for seals, e.g., FDA
 - * Factory certificate 2.2 according to DIN EN 10204
 - * Acceptance test certificate 3.1 according to DIN EN 10204 for the raw material
 - * Acceptance test certificate 3.1 according to DIN EN 10204
 - * AD2000-W2 possible



Fig. 3

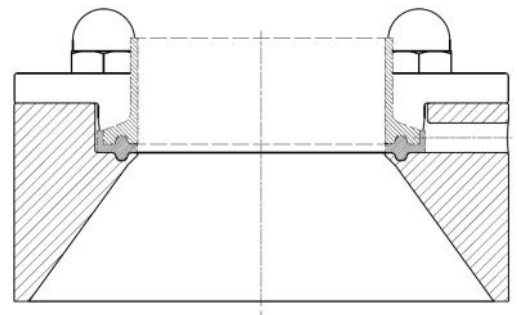


Fig. 4



Fig. 5