

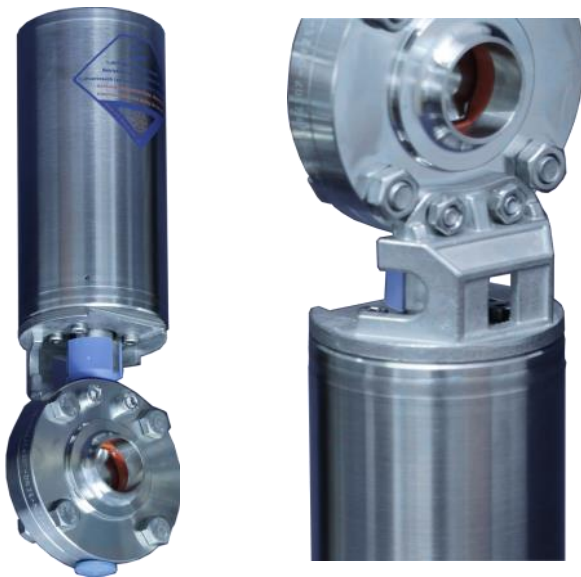


M&S bracket butterfly valve SV04

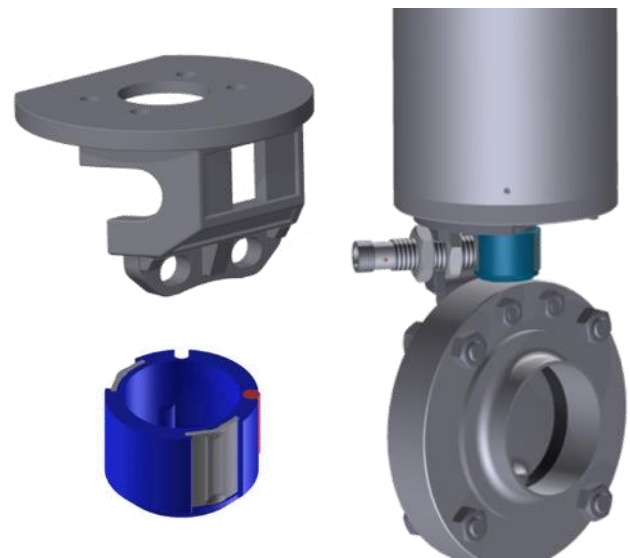
The M&S mounting brackets for assembling the PAMS pneumatic actuators are continuously optimised. The focus is not only on functionality and design, but also on ease of assembly and the adaption of automation technology.

With the optimised bracket for the butterfly valve type SV04, handling has been improved even further compared to the sheet metal version. Thanks to its open design, the sturdy single-sided bracket allows direct access to the fastening screws below the actuator. The mounting of the SV switching cap and proximity sensors is also facilitated. The unobstructed view of the visual indication of the switching position is also ensured as a result.

Bracket type SV04 assembled



Bracketed type SV04 components



Usage

Features

Versions

- For mounting pneumatic actuators type PAMS0 and PAMS1 on butterfly valves type SV04 (except type between flanges)
- For adaption of 2 proximity sensors M12x1 as end position feedback.

Usage

Features

Versions

- Compact, stable design with form-fit contour to the actuator.
- Hygienic, easy-to-clean open design.
- Easy mounting of the bracket due to direct accessibility of the fastening screws.
- Prepared for adaption of 2 proximity sensors M12x1.
- Modular design, double sensor optionally expandable.
- Clear view for visual indication of the switching position.
- Backwards compatible with all M&S valves type SV04.

Usage

Features

Versions

- **Material**
 - * Stainless steel investment casting 304 (CF8).