

M&S butterfly valves are shut-off devices that are used in almost every production line in foodstuff, beverages, cosmetics, chemical and pharmaceutical industries.

They have a simple modular design consisting of two housing halves and a stainless steel rotary flap. An elastomer seal and two friction bearings complete the valve. The flap is opened or closed with a quarter turn (90 degrees) around its centre axis. The flap is operated manually with a hand control, pneumatic or electrically.

Due to their design, butterfly valves guarantee very good cleanability and are a cost-effective and reliable alternative in relation to other shut-off devices.

M&S manufactures two different variants (type SV04 and Classic).

Usage

Features

Versions

- To shut off liquid, viscous and in a limited way gaseous media in pipelines, instruments and containers.
- Mainly in hygienic production lines or for cleaning processes as well as in energy supply.
- Also to control the flow volume in connection with a positioner.
- To deflect media flows by means of distributor combinations (T-SV).
- Design as leakage butterfly valve for safe media separation (e.g. to separate product from cleaning media).

M&S variants

Type SV04



i see product information butterfly valve type SV04

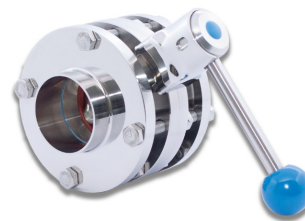
Is a further development of the Classic type.

Optimisation of the

- hygienic properties
- seal life
- the vacuum resistance

The type SV04 represents the current state-of-the-art in M&S technology.

Type Classic



i see product information butterfly valve type Classic

Is the „classic butterfly valve“ from M&S. It has been used successfully in the manufacturing industry for decades.

Due to increasing demands on cleanability, longer operating times and ease of assembly, the butterfly SV04 was developed.

Usage

Features

Versions

- Very easy to clean and sterilize as well as durable, robust, reliable and safe to operate.
- Housing parts and flaps in principle made of forged primary material.
- Gaskets in principle FDA-compliant.
- Marking of heat number, manufacturer and material.
- Modular system (see page 2).

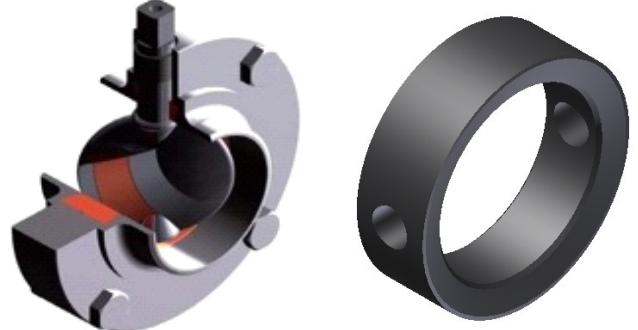


Visual distinguishing features

Type SV04



Type Classic



- Cross sleeve for manual operation made of plastic.
- T-geometry of the seal (cross-section).
- The between flanges design can be recognised by its closed, compact construction. The threaded bolts are on the inside.
- Separate fixing holes for the retaining bracket.
- Cast bracket for standard version.
- Sheet metal bracket for between flanges version.

📘 See product-information butterfly valve type SV04

- Cross sleeve for manual operation made of stainless steel.
- Trapezoidal geometry of the seal (cross-section).
- The between flanges design can be recognised by its open, compact construction. The threaded bolts are freely accessible.
- The retaining bracket is fastened to the enclosed screws.
- Sheet metal bracket for all versions.

📘 See product-information butterfly valve type Classic



Product family SV04



Product family Classic



Armaturen GmbH

Product information

M&S-Butterfly valves general information

Usage

Features

Versions

