



Armaturen GmbH

Armaturen, Rohre, Sonderteile aus Edelstahl
fittings, pipes, special parts of stainless steel

Montagezubehör
installation accessories



Armaturen GmbH

fon + 49 (0) 44 65 8 07 0
fax + 49 (0) 44 65 8 07 40



Armaturen GmbH

fon: + 49 (0) 44 65 8 07 0
fax: + 49 (0) 44 65 8 07 40

7 Montagezubehör
7 installation accessories

Hier finden Sie das notwendige Zubehör zur Installation von Anlagen, wie z.B. Schellen und Rohrschlitten jeglicher Art oder Kalottenfüße. Auch Rohrendkappen unterschiedlichster Größe sind in dieser Produktgruppe hinterlegt. Weiterhin möchten wir Sie darauf hinweisen, dass wir natürlich auch Sonderschellen nach Ihren Wünschen anfertigen.



Montagezubehör
Installation accessories

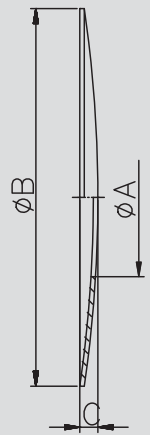
Here you will find the necessary accessories for the installation of plants, e.g. tube clamps and pipe holders slide-type of any kinds or spherical cap bases. End caps of pipes in different sizes are based in this product group as well. Furthermore we would like to add, that we can certainly manufacture individual pipe clamps according to your demand.

7.01 Rohrkappen
7.01 pipe ends
Art.-Nr. 70100-

| DN | A | B | C | D | E | Gew. |
|-----|-------|-------|------|----|----|-------|
| mm | mm | mm | mm | mm | mm | kg |
| 25 | 28,5 | 125,0 | 8,0 | | | 0,180 |
| 32 | 34,5 | 125,0 | 8,0 | | | 0,120 |
| 40 | 40,5 | 125,0 | 8,0 | | | 0,170 |
| 50 | 52,5 | 125,0 | 6,0 | | | 0,110 |
| 65 | 70,5 | 125,0 | 6,0 | | | 0,130 |
| 80 | 85,5 | 180,0 | 10,0 | | | 0,145 |
| 100 | 104,5 | 180,0 | 10,0 | | | 0,270 |

AISI 304-1.4301

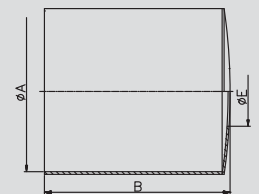
| Art.-Nr. | Preis | Art.-Nr. | Preis |
|----------|-------|----------|-------|
| poliert | EUR | matt | EUR |
| -0251 | 9,20 | -0252 | 8,60 |
| -0321 | 9,20 | -0322 | 8,60 |
| -0401 | 9,35 | -0402 | 8,75 |
| -0501 | 9,65 | -0502 | 9,00 |
| -0651 | 9,55 | -0652 | 9,20 |
| -0801 | 22,85 | -0802 | 22,00 |
| -1001 | 23,20 | -1002 | 22,35 |

Rosette
rosette

Art.-Nr. 70200-

| DN | A | B | C | D | E | Gew. |
|-----|-------|-------|----|----|-------|-------|
| mm | mm | mm | mm | mm | mm | kg |
| 25 | 81,0 | 140,0 | | | 28,2 | 0,640 |
| 32 | 100,0 | 140,0 | | | 34,2 | 0,660 |
| 40 | 100,0 | 140,0 | | | 40,2 | 0,650 |
| 50 | 125,0 | 140,0 | | | 52,2 | 0,630 |
| 65 | 125,0 | 140,0 | | | 70,3 | 0,810 |
| 80 | 125,0 | 160,0 | | | 85,3 | 1,140 |
| 100 | 150,0 | 200,0 | | | 104,3 | 2,120 |

AISI 304-1.4301

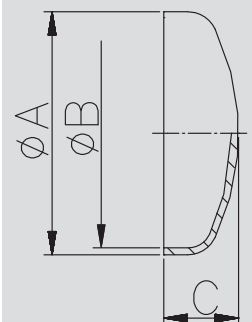
| Art.-Nr. | Preis | Art.-Nr. | Preis |
|----------|-------|----------|-------|
| poliert | EUR | matt | EUR |
| -0251 | 41,60 | -0252 | 38,25 |
| -0321 | 41,70 | -0322 | 38,35 |
| -0401 | 41,70 | -0402 | 38,35 |
| -0501 | 56,60 | -0502 | 52,05 |
| -0651 | 55,10 | -0652 | 52,05 |
| -0801 | 57,30 | -0802 | 54,15 |
| -1001 | 75,35 | -1002 | 71,20 |

Glocke
bell for welding

Art.-Nr. 7030-

| DN | A | B | C | D | E | Gew. |
|------|-------|-------|------|----|----|-------|
| mm | mm | mm | mm | mm | mm | kg |
| 25 | 28,0 | 25,0 | 11,0 | | | 0,010 |
| 32 | 34,0 | 31,0 | 14,0 | | | 0,020 |
| 40 | 40,0 | 37,0 | 14,0 | | | 0,030 |
| 50 | 52,0 | 49,0 | 17,0 | | | 0,040 |
| 65 | 70,0 | 66,0 | 22,0 | | | 0,090 |
| 80 | 85,0 | 81,0 | 24,0 | | | 0,130 |
| 100 | 104,0 | 100,0 | 28,0 | | | 0,200 |
| 125 | 129,0 | 125,0 | 33,0 | | | 0,290 |
| 150 | 154,0 | 150,0 | 38,0 | | | 0,430 |
| 200 | 204,0 | 200,0 | 47,0 | | | 0,750 |
| 250 | 254,0 | 250,0 | 50,0 | | | 1,110 |
| 1" | 25,4 | 22,9 | 12,0 | | | 0,010 |
| 1,5" | 38,1 | 35,1 | 14,0 | | | 0,030 |
| 2" | 50,8 | 47,8 | 15,0 | | | 0,040 |
| 2,5" | 63,5 | 60,5 | 18,0 | | | 0,090 |
| 3" | 76,1 | 72,1 | 20,0 | | | 0,130 |
| 4" | 101,6 | 97,6 | 28,0 | | | 0,200 |

AISI 304/304L-1.4301/1.4307
AISI 316L-1.4404

| Art.-Nr. | Preis | Art.-Nr. | Preis | Art.-Nr. | Preis | Art.-Nr. | Preis |
|----------|-------|----------|-------|----------|--------|----------|--------|
| poliert | EUR | matt | EUR | poliert | EUR | matt | EUR |
| -00251 | 5,10 | -00252 | 4,75 | -00253 | 7,40 | -00254 | 6,90 |
| -00321 | 5,30 | -00322 | 4,95 | -00323 | 7,75 | -00324 | 7,25 |
| -00401 | 5,80 | -00402 | 5,40 | -00403 | 8,50 | -00404 | 7,95 |
| -00501 | 6,70 | -00502 | 6,25 | -00503 | 10,00 | -00504 | 9,35 |
| -00651 | 8,30 | -00652 | 7,95 | -00653 | 12,20 | -00654 | 11,75 |
| -00801 | 9,10 | -00802 | 8,75 | -00803 | 13,75 | -00804 | 13,20 |
| -01001 | 11,25 | -01002 | 10,80 | -01003 | 17,00 | -01004 | 16,35 |
| -01251 | 15,90 | -01252 | 15,30 | -01253 | 25,50 | -01254 | 24,55 |
| -01501 | 21,25 | -01502 | 20,45 | -01503 | 32,95 | -01504 | 31,70 |
| -02001 | 44,85 | -02002 | 43,20 | -02003 | 71,65 | -02004 | 69,00 |
| -02501 | 77,00 | -02502 | 74,15 | -02503 | 114,15 | -02504 | 109,95 |
| -11001 | 6,40 | -11002 | 6,15 | -11003 | 9,30 | -11004 | 8,90 |
| -11121 | 6,85 | -11122 | 6,55 | -11123 | 10,05 | -11124 | 9,65 |
| -12001 | 6,80 | -12002 | 6,65 | -12003 | 10,10 | -12004 | 9,90 |
| -12121 | 8,50 | -12122 | 8,30 | -12123 | 12,45 | -12124 | 12,20 |
| -13001 | 9,30 | -13002 | 9,10 | -13003 | 13,95 | -13004 | 13,65 |
| -14001 | 11,75 | -14002 | 11,50 | -14003 | 17,70 | -14004 | 17,35 |

**Gewölbter Boden
DIN/Zoll**
**convex bottom
DIN/inch**


7.02 Kompensator, Kalottenfuß
7.02 compensator, spherical cap base

| Kompensator DIN compensator DIN | Art.-Nr. 70400- | | | | | | | AISI 304/304L-1.4301/1.4307 | | | | AISI 316L-1.4404 | | | | |
|------------------------------------|-----------------|-------|-------|-------|----|----|-------|-----------------------------|--------|----------|--------|------------------|--------|----------|--------|--|
| | DN | A | B | C | D | E | Gew. | Art.-Nr. | Preis | Art.-Nr. | Preis | Art.-Nr. | Preis | Art.-Nr. | Preis | |
| | mm | mm | mm | mm | mm | mm | kg | poliert | EUR | matt | EUR | poliert | EUR | matt | EUR | |
| | 25 | 200,0 | 28,0 | 25,0 | | | 0,210 | -0251 | 86,30 | -0252 | 78,85 | -0253 | 123,75 | -0254 | 112,50 | |
| | 32 | 200,0 | 34,0 | 31,0 | | | 0,220 | -0321 | 110,20 | -0322 | 100,70 | -0323 | 146,30 | -0324 | 133,00 | |
| | 40 | 200,0 | 40,0 | 37,0 | | | 0,320 | -0401 | 107,80 | -0402 | 98,50 | -0403 | 143,10 | -0404 | 130,05 | |
| | 50 | 200,0 | 52,0 | 49,0 | | | 0,370 | -0501 | 132,80 | -0502 | 121,35 | -0503 | 176,25 | -0504 | 160,20 | |
| | 65 | 200,0 | 70,0 | 66,0 | | | 0,590 | -0651 | 166,05 | -0652 | 151,70 | -0653 | 278,45 | -0654 | 253,10 | |
| | 80 | 200,0 | 85,0 | 81,0 | | | 0,840 | -0801 | 234,45 | -0802 | 214,20 | -0803 | 311,20 | -0804 | 282,90 | |
| | 100 | 300,0 | 104,0 | 100,0 | | | 1,530 | -1001 | 277,20 | -1002 | 253,30 | -1003 | 367,95 | -1004 | 334,50 | |
| | | | | | | | | | | | | | | | | |
| | | | | | | | | | | | | | | | | |
| | | | | | | | | | | | | | | | | |

| Kalottenfuß kpl. mit Teller spherical cap base cpl. | Art.-Nr. 70501- | | | | | | | AISI 304-1.4301 | |
|--|-----------------|-------|------|---------|------|-------|-------|-----------------|-------|
| | DN | A | B | C | D | E | Gew. | Art.-Nr. | Preis |
| | mm | mm | mm | mm | mm | mm | kg | blank | EUR |
| | 0,5" | 100,0 | 29,0 | G1/2" | 35,0 | 120,0 | 0,780 | -0121 | 35,90 |
| | 0,75" | 100,0 | 32,0 | G3/4" | 38,0 | 120,0 | 0,940 | -0341 | 38,65 |
| | 1" | 120,0 | 39,5 | G1" | 45,0 | 120,0 | 1,360 | -1001 | 46,75 |
| | 1,25" | 150,0 | 49,5 | G1.1/4" | 55,0 | 160,0 | 3,050 | -1141 | 77,15 |
| | 1,5" | 150,0 | 57,0 | G1.1/2" | 60,0 | 160,0 | 3,860 | -1121 | 84,45 |
| | | | | | | | | | |
| | | | | | | | | | |
| | | | | | | | | | |
| | | | | | | | | | |
| | | | | | | | | | |

G: Rohrgewinde ISO 228-1 G: pipe thread ISO 228-1

| Kalottenfuß spherical cap base | Art.-Nr. 70601- | | | | | | | AISI 304-1.4301 | |
|-----------------------------------|-----------------|-------|----|---------|----|----|-------|-----------------|-------|
| | DN | A | B | C | D | E | Gew. | Art.-Nr. | Preis |
| | mm | mm | mm | mm | mm | mm | kg | blank | EUR |
| | 0,5" | 100,0 | | G1/2" | | | 0,230 | -0121 | 10,00 |
| | 0,75" | 100,0 | | G3/4" | | | 0,380 | -0341 | 11,25 |
| | 1" | 120,0 | | G1" | | | 0,720 | -1001 | 13,85 |
| | 1,25" | 150,0 | | G1.1/4" | | | 1,470 | -1141 | 23,35 |
| | 1,5" | 150,0 | | G1.1/2" | | | 1,900 | -1121 | 23,55 |
| | | | | | | | | | |
| | | | | | | | | | |
| | | | | | | | | | |
| | | | | | | | | | |
| | | | | | | | | | |

G: Rohrgewinde ISO 228-1 G: pipe thread ISO 228-1

7.03 Zubehör Kalottenfuß
7.03 accessories spherical cap base
Art.-Nr. 70701-

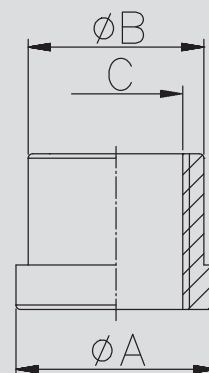
AISI 304-1.4301

| DN | A | B | C | D | E | Gew. |
|-------|------|------|---------|----|----|-------|
| mm | mm | mm | mm | mm | mm | kg |
| 0,5" | 35,0 | 29,0 | G1/2" | | | 0,080 |
| 0,75" | 38,0 | 32,0 | G3/4" | | | 0,080 |
| 1" | 45,0 | 39,5 | G1" | | | 0,130 |
| 1,25" | 55,0 | 49,5 | G1.1/4" | | | 0,210 |
| 1,5" | 65,0 | 57,0 | G1.1/2" | | | 0,420 |

| Art.-Nr. | Preis |
|----------|-------|
| blank | EUR |
| -0121 | 8,00 |
| -0341 | 8,70 |
| -1001 | 10,40 |
| -1141 | 13,85 |
| -1121 | 15,50 |

G: Rohrgewinde ISO 228-1

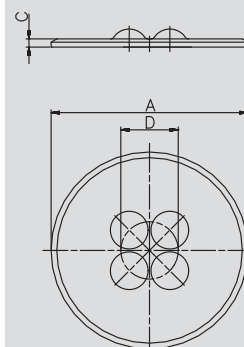
G: pipe thread ISO 228-1

Kalottenmuffe
spherical cap socket

Art.-Nr. 70801-

AISI 304-1.4301

| DN | A | B | C | D | E | Gew. |
|------|-------|-----|----|------|----|-------|
| mm | mm | mm | mm | mm | mm | kg |
| 1" | 120,0 | 5,0 | | 35,0 | | 0,430 |
| 1,5" | 160,0 | 8,0 | | 50,0 | | 1,270 |

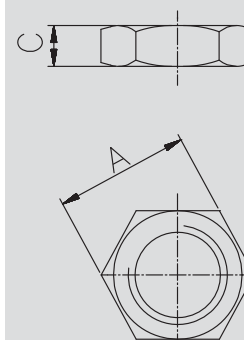
| Art.-Nr. | Preis |
|----------|-------|
| blank | EUR |
| -1001 | 13,95 |
| -1121 | 25,20 |

Kalottenteller
spherical cap disk

Art.-Nr. 70901-

AISI 316Ti-1.4571

| DN | A | B | C | D | E | Gew. |
|-------|------|----|------|----|----|-------|
| mm | mm | mm | mm | mm | mm | kg |
| 0,5" | 32,0 | | 8,0 | | | 0,030 |
| 0,75" | 36,0 | | 9,0 | | | 0,040 |
| 1" | 46,0 | | 10,0 | | | 0,070 |
| 1,25" | 55,0 | | 11,0 | | | 0,100 |
| 1,5" | 60,0 | | 12,0 | | | 0,120 |

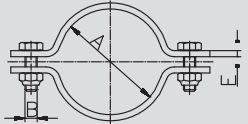
| Art.-Nr. | Preis |
|----------|-------|
| blank | EUR |
| -0125 | 3,90 |
| -0345 | 4,75 |
| -1005 | 8,55 |
| -1145 | 14,75 |
| -1125 | 20,15 |

Kontermutter für Kalottenfuß
lock nut


7.04 Rohrschelle DIN
7.04 pipe clamp DIN

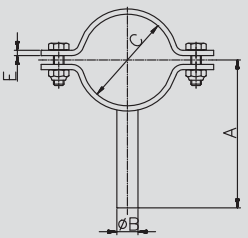
| Rohrschelle DIN ohne Schaft pipe clamp DIN without shank | Art.-Nr. 73400- | | | | | | | AISI 304-1.4301 | | | |
|---|-----------------|---------|---------|---------|---------|---------|------------|---------------------|--------------|------------------|--------------|
| | DN | A mm | B mm | C mm | D mm | E mm | Gew. kg | Art.-Nr. poliert | Preis EUR | Art.-Nr. matt | Preis EUR |
| | 10 | 12,0 | M6x20 | | | 20x2 | 0,030 | -0101 | 3,85 | -0102 | 4,05 |
| | 15 | 18,0 | M6x20 | | | 20x2 | 0,040 | -0151 | 3,85 | -0152 | 4,05 |
| | 20 | 22,0 | M6x20 | | | 20x3 | 0,060 | -0201 | 3,85 | -0202 | 4,05 |
| | 25 | 28,0 | M6x20 | | | 20x3 | 0,060 | -0251 | 3,20 | -0252 | 3,35 |
| | 32 | 34,0 | M6x20 | | | 20x3 | 0,080 | -0321 | 3,50 | -0322 | 3,65 |
| | 40 | 40,0 | M6x20 | | | 20x3 | 0,080 | -0401 | 3,50 | -0402 | 3,65 |
| | 50 | 52,0 | M6x20 | | | 20x3 | 0,100 | -0501 | 4,15 | -0502 | 4,25 |
| | 65 | 70,0 | M6x20 | | | 20x3 | 0,130 | -0651 | 4,35 | -0652 | 4,45 |
| | 80 | 85,0 | M6x20 | | | 25x3 | 0,190 | -0801 | 5,90 | -0802 | 6,05 |
| | 100 | 104,0 | M6x20 | | | 25x3 | 0,240 | -1001 | 6,70 | -1002 | 6,85 |
| | 125 | 129,0 | M8x27 | | | 30x3 | 0,370 | -1251 | 20,95 | -1252 | 21,40 |
| | 150 | 154,0 | M8x27 | | | 30x3 | 0,420 | -1501 | 25,80 | -1502 | 26,35 |
| | 200 | 204,0 | M10x40 | | | 40x4 | 1,020 | -2001 | 41,40 | -2002 | 42,25 |
| | 250 | 254,0 | M10x40 | | | 40x4 | 1,300 | -2501 | 59,05 | -2502 | 60,25 |

E: Flachmaterial E: strip-steel



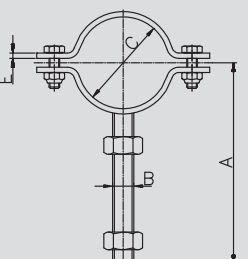
| Rohrschelle DIN mit Schaft pipe clamp DIN with shank | Art.-Nr. 73500- | | | | | | | AISI 304-1.4301 | | | |
|---|-----------------|---------|---------|---------|---------|---------|------------|---------------------|--------------|------------------|--------------|
| | DN | A mm | B mm | C mm | D mm | E mm | Gew. kg | Art.-Nr. poliert | Preis EUR | Art.-Nr. matt | Preis EUR |
| | 10 | 62,5 | 8,0 | 12,0 | | 20x2 | 0,060 | -0101 | 5,70 | -0102 | 5,95 |
| | 15 | 65,5 | 8,0 | 18,0 | | 20x2 | 0,070 | -0151 | 5,70 | -0152 | 5,95 |
| | 20 | 68,5 | 8,0 | 22,0 | | 20x3 | 0,090 | -0201 | 5,70 | -0202 | 5,95 |
| | 25 | 71,5 | 10,0 | 28,0 | | 20x3 | 0,110 | -0251 | 5,55 | -0252 | 5,80 |
| | 32 | 74,5 | 10,0 | 34,0 | | 20x3 | 0,120 | -0321 | 5,75 | -0322 | 6,00 |
| | 40 | 77,5 | 10,0 | 40,0 | | 20x3 | 0,130 | -0401 | 5,75 | -0402 | 6,00 |
| | 50 | 83,5 | 12,0 | 52,0 | | 20x3 | 0,160 | -0501 | 6,40 | -0502 | 6,55 |
| | 65 | 92,5 | 12,0 | 70,0 | | 20x3 | 0,190 | -0651 | 7,15 | -0652 | 7,30 |
| | 80 | 100,0 | 12,0 | 85,0 | | 25x3 | 0,250 | -0801 | 8,65 | -0802 | 8,85 |
| | 100 | 109,5 | 12,0 | 104,0 | | 25x3 | 0,290 | -1001 | 9,50 | -1002 | 9,70 |
| | 125 | 140,5 | 16,0 | 129,0 | | 30x3 | 0,510 | -1251 | 28,10 | -1252 | 28,70 |
| | 150 | 179,5 | 16,0 | 154,0 | | 30x3 | 1,035 | -1501 | 37,30 | -1502 | 38,05 |
| | 200 | 226,0 | 20,0 | 204,0 | | 40x4 | 1,320 | -2001 | 58,05 | -2002 | 59,25 |
| | 250 | 251,0 | 20,0 | 254,0 | | 40x4 | 1,560 | -2501 | 85,90 | -2502 | 87,65 |

E: Flachmaterial E: strip-steel



| Rohrschelle DIN mit Gewindeschaft pipe clamp DIN with threaded shank | Art.-Nr. 73600- | | | | | | | AISI 304-1.4301 | | | |
|---|-----------------|---------|---------|---------|---------|---------|------------|---------------------|--------------|------------------|--------------|
| | DN | A mm | B mm | C mm | D mm | E mm | Gew. kg | Art.-Nr. poliert | Preis EUR | Art.-Nr. matt | Preis EUR |
| | 10 | 92,5 | M8 | 12,0 | | 20x2 | 0,040 | -0101 | 7,65 | -0102 | 8,00 |
| | 15 | 95,5 | M8 | 18,0 | | 20x2 | 0,065 | -0151 | 7,65 | -0152 | 8,00 |
| | 20 | 98,5 | M8 | 22,0 | | 20x3 | 0,080 | -0201 | 7,65 | -0202 | 8,00 |
| | 25 | 101,5 | M10 | 28,0 | | 20x3 | 0,100 | -0251 | 6,65 | -0252 | 6,95 |
| | 32 | 104,5 | M10 | 34,0 | | 20x3 | 0,110 | -0321 | 6,85 | -0322 | 7,15 |
| | 40 | 107,5 | M10 | 40,0 | | 20x3 | 0,115 | -0401 | 7,05 | -0402 | 7,35 |
| | 50 | 113,5 | M12 | 52,0 | | 20x3 | 0,130 | -0501 | 7,80 | -0502 | 8,00 |
| | 65 | 122,5 | M12 | 70,0 | | 20x3 | 0,160 | -0651 | 8,75 | -0652 | 8,95 |
| | 80 | 130,0 | M12 | 85,0 | | 25x3 | 0,280 | -0801 | 12,10 | -0802 | 12,35 |
| | 100 | 139,5 | M12 | 104,0 | | 25x3 | 0,320 | -1001 | 13,15 | -1002 | 13,45 |
| | 125 | 167,0 | M16 | 129,0 | | 30x3 | 0,480 | -1251 | 39,75 | -1252 | 40,55 |
| | 150 | 200,0 | M16 | 154,0 | | 30x3 | 1,035 | -1501 | 53,65 | -1502 | 54,75 |
| | 200 | 246,0 | M20 | 204,0 | | 40x4 | 1,480 | -2001 | 78,10 | -2002 | 79,70 |

E: Flachmaterial E: strip-steel

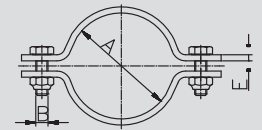


7.05 Rohrschelle Zoll
7.05 pipe clamp inch
Art.-Nr. 72401-

| DN | A | B | C | D | E | Gew. |
|-------|-------|-------|----|----|------|-------|
| mm | mm | mm | mm | mm | mm | kg |
| 1" | 25,4 | M6x20 | | | 20x3 | 0,050 |
| 1,25" | 31,8 | M6x20 | | | 20x3 | 0,065 |
| 1,5" | 38,1 | M6x20 | | | 20x3 | 0,070 |
| 2" | 50,8 | M6x20 | | | 20x3 | 0,080 |
| 2,5" | 63,5 | M6x20 | | | 20x3 | 0,090 |
| 3" | 76,1 | M6x20 | | | 25x3 | 0,150 |
| 4" | 101,6 | M6x20 | | | 25x3 | 0,225 |

AISI 304-1.4301

| Art.-Nr. | Preis | Art.-Nr. | Preis |
|----------|-------|----------|-------|
| poliert | EUR | matt | EUR |
| -1001 | 3,30 | -1002 | 3,45 |
| -1141 | 3,65 | -1142 | 3,80 |
| -1121 | 3,80 | -1122 | 4,00 |
| -2001 | 4,50 | -2002 | 4,60 |
| -2121 | 4,85 | -2122 | 4,95 |
| -3001 | 6,60 | -3002 | 6,75 |
| -4001 | 7,45 | -4002 | 7,60 |

Rohrschelle Zoll ohne Schaft
pipe clamp inch without shank


E: Flachmaterial

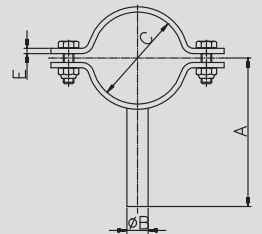
E: strip-steel

Art.-Nr. 72501-

| DN | A | B | C | D | E | Gew. |
|-------|-------|------|-------|----|------|-------|
| mm | mm | mm | mm | mm | mm | kg |
| 1" | 70,5 | 10,0 | 25,4 | | 20x3 | 0,095 |
| 1,25" | 73,5 | 10,0 | 31,8 | | 20x3 | 0,100 |
| 1,5" | 76,5 | 10,0 | 38,1 | | 20x3 | 0,110 |
| 2" | 83,0 | 12,0 | 50,8 | | 20x3 | 0,125 |
| 2,5" | 89,5 | 12,0 | 63,5 | | 20x3 | 0,150 |
| 3" | 96,0 | 12,0 | 76,1 | | 25x3 | 0,270 |
| 4" | 108,5 | 12,0 | 101,6 | | 25x3 | 0,300 |

AISI 304-1.4301

| Art.-Nr. | Preis | Art.-Nr. | Preis |
|----------|-------|----------|-------|
| poliert | EUR | matt | EUR |
| -1001 | 5,75 | -1002 | 6,00 |
| -1141 | 6,00 | -1142 | 6,25 |
| -1121 | 6,25 | -1122 | 6,50 |
| -2001 | 6,95 | -2002 | 7,10 |
| -2121 | 7,85 | -2122 | 8,05 |
| -3001 | 9,60 | -3002 | 9,80 |
| -4001 | 10,50 | -4002 | 10,75 |

Rohrschelle Zoll mit Schaft
pipe clamp inch with shank


E: Flachmaterial

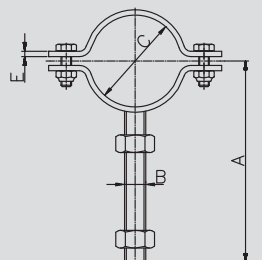
E: strip-steel

Art.-Nr. 72601-

| DN | A | B | C | D | E | Gew. |
|-------|-------|-----|-------|----|------|-------|
| mm | mm | mm | mm | mm | mm | kg |
| 1" | 100,5 | M10 | 25,4 | | 20x3 | 0,100 |
| 1,25" | 103,5 | M10 | 31,8 | | 20x3 | 0,110 |
| 1,5" | 106,5 | M10 | 38,1 | | 20x3 | 0,115 |
| 2" | 113,0 | M12 | 50,8 | | 20x3 | 0,130 |
| 2,5" | 119,5 | M12 | 63,5 | | 20x3 | 0,160 |
| 3" | 126,0 | M12 | 76,1 | | 25x3 | 0,280 |
| 4" | 138,5 | M12 | 101,6 | | 25x3 | 0,320 |

AISI 304-1.4301

| Art.-Nr. | Preis | Art.-Nr. | Preis |
|----------|-------|----------|-------|
| poliert | EUR | matt | EUR |
| -1001 | 6,80 | -1002 | 7,10 |
| -1141 | 7,00 | -1142 | 7,30 |
| -1121 | 7,20 | -1122 | 7,50 |
| -2001 | 8,00 | -2002 | 8,20 |
| -2121 | 8,95 | -2122 | 9,15 |
| -3001 | 12,30 | -3002 | 12,55 |
| -4001 | 13,40 | -4002 | 13,70 |

Rohrschelle Zoll mit Gewindeschaft
pipe clamp inch with threaded shank


E: Flachmaterial

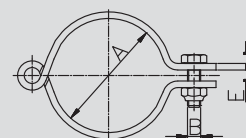
E: strip-steel

7.07 Rohrschelle DIN klappbar
7.07 pipe clamp DIN hinged
Art.-Nr. 71400-

| DN | A | B | C | D | E | Gew. |
|-----|-------|-----|----|----|------|-------|
| mm | mm | mm | mm | mm | mm | kg |
| 20 | 22,0 | M8 | | | 25x2 | 0,060 |
| 25 | 28,0 | M8 | | | 25x2 | 0,070 |
| 32 | 34,0 | M8 | | | 25x2 | 0,070 |
| 40 | 40,0 | M8 | | | 25x2 | 0,080 |
| 50 | 52,0 | M10 | | | 30x3 | 0,190 |
| 65 | 70,0 | M10 | | | 30x3 | 0,230 |
| 80 | 85,0 | M10 | | | 30x3 | 0,260 |
| 100 | 104,0 | M10 | | | 30x3 | 0,310 |

AISI 304-1.4301

| Art.-Nr. | Preis | Art.-Nr. | Preis |
|----------|-------|----------|-------|
| poliert | EUR | matt | EUR |
| -0201 | 14,40 | -0202 | 14,95 |
| -0251 | 13,95 | -0252 | 14,50 |
| -0321 | 14,85 | -0322 | 15,40 |
| -0401 | 15,75 | -0402 | 16,35 |
| -0501 | 21,10 | -0502 | 21,45 |
| -0651 | 23,60 | -0652 | 23,95 |
| -0801 | 26,95 | -0802 | 27,35 |
| -1001 | 27,65 | -1002 | 28,05 |

**Rohrschelle DIN
ohne Schaft
- klappbar**
**pipe clamp DIN
without shank
- hinged**


E: Flachmaterial

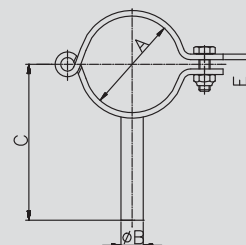
E: strip-steel

Art.-Nr. 71500-

| DN | A | B | C | D | E | Gew. |
|-----|-------|------|-------|----|------|-------|
| mm | mm | mm | mm | mm | mm | kg |
| 20 | 22,0 | 8,0 | 68,5 | | 25x2 | 0,080 |
| 25 | 28,0 | 10,0 | 71,5 | | 25x2 | 0,100 |
| 32 | 34,0 | 10,0 | 74,5 | | 25x2 | 0,100 |
| 40 | 40,0 | 10,0 | 77,5 | | 25x2 | 0,120 |
| 50 | 52,0 | 12,0 | 83,5 | | 30x3 | 0,220 |
| 65 | 70,0 | 12,0 | 92,5 | | 30x3 | 0,280 |
| 80 | 85,0 | 12,0 | 100,0 | | 30x3 | 0,340 |
| 100 | 104,0 | 12,0 | 109,5 | | 30x3 | 0,390 |

AISI 304-1.4301

| Art.-Nr. | Preis | Art.-Nr. | Preis |
|----------|-------|----------|-------|
| poliert | EUR | matt | EUR |
| -0201 | 23,60 | -0202 | 24,30 |
| -0251 | 22,85 | -0252 | 23,55 |
| -0321 | 24,10 | -0322 | 24,80 |
| -0401 | 25,20 | -0402 | 25,95 |
| -0501 | 28,10 | -0502 | 28,55 |
| -0651 | 30,60 | -0652 | 31,05 |
| -0801 | 33,95 | -0802 | 34,45 |
| -1001 | 34,75 | -1002 | 35,25 |

**Rohrschelle DIN
mit Schaft
- klappbar**
**pipe clamp DIN
with shank - hinged**


E: Flachmaterial

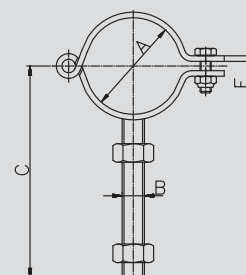
E: strip-steel

Art.-Nr. 71600-

| DN | A | B | C | D | E | Gew. |
|-----|-------|-----|-------|----|------|-------|
| mm | mm | mm | mm | mm | mm | kg |
| 20 | 22,0 | M8 | 98,5 | | 25x2 | 0,080 |
| 25 | 28,0 | M10 | 101,5 | | 25x2 | 0,100 |
| 32 | 34,0 | M10 | 104,5 | | 25x2 | 0,100 |
| 40 | 40,0 | M10 | 107,5 | | 25x2 | 0,120 |
| 50 | 52,0 | M12 | 113,5 | | 30x3 | 0,220 |
| 65 | 70,0 | M12 | 122,5 | | 30x3 | 0,280 |
| 80 | 85,0 | M12 | 130,0 | | 30x3 | 0,340 |
| 100 | 104,0 | M12 | 139,5 | | 30x3 | 0,390 |

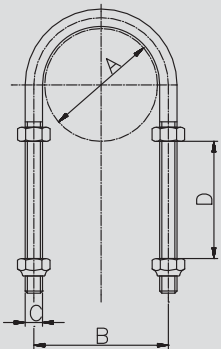
AISI 304-1.4301

| Art.-Nr. | Preis | Art.-Nr. | Preis |
|----------|-------|----------|-------|
| poliert | EUR | matt | EUR |
| -0201 | 26,55 | -0202 | 27,35 |
| -0251 | 25,90 | -0252 | 26,65 |
| -0321 | 27,40 | -0322 | 28,20 |
| -0401 | 28,80 | -0402 | 29,65 |
| -0501 | 30,70 | -0502 | 31,15 |
| -0651 | 33,95 | -0652 | 34,45 |
| -0801 | 38,30 | -0802 | 38,85 |
| -1001 | 41,30 | -1002 | 41,90 |

**Rohrschelle DIN
mit Gewindegenschaft
- klappbar**
**pipe clamp DIN
with threaded shank
- hinged**


E: Flachmaterial

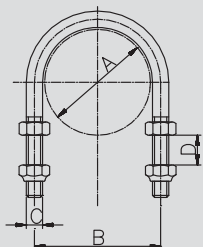
E: strip-steel

7.08 Rohrspannbügel
7.08 pipe support
Rohrspannbügel kpl. DIN Standard (54 mm)
pipe support cpl. DIN standard (54 mm)

Art.-Nr. 73700-

| DN | A | B | C | D | E | Gew. |
|-----|-------|-------|-----|------|----|-------|
| mm | mm | mm | mm | mm | mm | kg |
| 10 | 12,0 | 20,0 | M6 | 54,0 | | 0,046 |
| 15 | 18,0 | 26,0 | M6 | 54,0 | | 0,046 |
| 20 | 22,0 | 30,0 | M6 | 54,0 | | 0,046 |
| 25 | 28,0 | 36,0 | M6 | 54,0 | | 0,048 |
| 32 | 34,0 | 42,0 | M6 | 54,0 | | 0,048 |
| 40 | 40,0 | 50,0 | M8 | 54,0 | | 0,095 |
| 50 | 52,0 | 62,0 | M8 | 54,0 | | 0,095 |
| 65 | 70,0 | 80,0 | M8 | 54,0 | | 0,130 |
| 80 | 85,0 | 97,0 | M10 | 54,0 | | 0,140 |
| 100 | 104,0 | 116,0 | M10 | 54,0 | | 0,245 |
| 125 | 129,0 | 141,0 | M10 | 54,0 | | 0,230 |
| 150 | 154,0 | 168,0 | M12 | 54,0 | | 0,230 |

AISI 304-1.4301

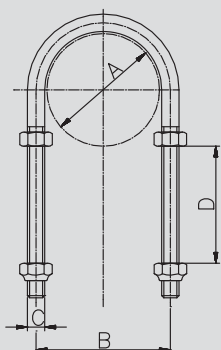
| Art.-Nr. | Preis | Art.-Nr. | Preis |
|----------|-------|----------|-------|
| poliert | EUR | matt | EUR |
| -0101 | (+) | -0102 | (+) |
| -0151 | (+) | -0152 | (+) |
| -0201 | (+) | -0202 | (+) |
| -0251 | 5,95 | -0252 | 5,95 |
| -0321 | 6,35 | -0322 | 6,35 |
| -0401 | 7,40 | -0402 | 7,40 |
| -0501 | 8,00 | -0502 | 8,00 |
| -0651 | 8,65 | -0652 | 8,65 |
| -0801 | 13,40 | -0802 | 13,40 |
| -1001 | 16,90 | -1002 | 16,90 |
| -1251 | 17,75 | -1252 | 17,75 |
| -1501 | 28,65 | -1502 | 28,65 |

Rohrspannbügel kpl. DIN kurz (8 mm)
pipe support cpl. DIN short (8 mm)

Art.-Nr. 73710-

| DN | A | B | C | D | E | Gew. |
|-----|-------|-------|-----|-----|----|-------|
| mm | mm | mm | mm | mm | mm | kg |
| 10 | 12,0 | 20,0 | M6 | 8,0 | | 0,020 |
| 15 | 18,0 | 26,0 | M6 | 8,0 | | 0,020 |
| 20 | 22,0 | 30,0 | M6 | 8,0 | | 0,020 |
| 25 | 28,0 | 36,0 | M6 | 8,0 | | 0,020 |
| 32 | 34,0 | 42,0 | M6 | 8,0 | | 0,030 |
| 40 | 40,0 | 50,0 | M8 | 8,0 | | 0,070 |
| 50 | 52,0 | 62,0 | M8 | 8,0 | | 0,080 |
| 65 | 70,0 | 80,0 | M8 | 8,0 | | 0,100 |
| 80 | 85,0 | 97,0 | M10 | 8,0 | | 0,190 |
| 100 | 104,0 | 116,0 | M10 | 8,0 | | 0,220 |
| 125 | 129,0 | 141,0 | M10 | 8,0 | | 0,230 |
| 150 | 154,0 | 168,0 | M12 | 8,0 | | 0,240 |

AISI 304-1.4301

| Art.-Nr. | Preis | Art.-Nr. | Preis |
|----------|-------|----------|-------|
| poliert | EUR | matt | EUR |
| -0101 | (+) | -0102 | (+) |
| -0151 | (+) | -0152 | (+) |
| -0201 | (+) | -0202 | (+) |
| -0251 | 5,85 | -0252 | 5,85 |
| -0321 | 6,30 | -0322 | 6,30 |
| -0401 | 7,05 | -0402 | 7,05 |
| -0501 | 7,50 | -0502 | 7,50 |
| -0651 | 8,15 | -0652 | 8,15 |
| -0801 | 12,00 | -0802 | 12,00 |
| -1001 | 15,30 | -1002 | 15,30 |
| -1251 | 17,65 | -1252 | 17,65 |
| -1501 | 25,45 | -1502 | 25,45 |

Rohrspannbügel kpl. DIN lang (100 mm)
pipe support cpl. DIN long (100 mm)

Art.-Nr. 73720-

| DN | A | B | C | D | E | Gew. |
|-----|-------|-------|-----|-------|----|-------|
| mm | mm | mm | mm | mm | mm | kg |
| 10 | 12,0 | 20,0 | M6 | 100,0 | | 0,055 |
| 15 | 18,0 | 26,0 | M6 | 100,0 | | 0,055 |
| 20 | 22,0 | 30,0 | M6 | 100,0 | | 0,055 |
| 25 | 28,0 | 36,0 | M6 | 100,0 | | 0,065 |
| 32 | 34,0 | 42,0 | M6 | 100,0 | | 0,065 |
| 40 | 40,0 | 50,0 | M8 | 100,0 | | 0,110 |
| 50 | 52,0 | 62,0 | M8 | 100,0 | | 0,110 |
| 65 | 70,0 | 80,0 | M8 | 100,0 | | 0,145 |
| 80 | 85,0 | 97,0 | M10 | 100,0 | | 0,155 |
| 100 | 104,0 | 116,0 | M10 | 100,0 | | 0,265 |
| 125 | 129,0 | 141,0 | M10 | 100,0 | | 0,250 |
| 150 | 154,0 | 168,0 | M12 | 100,0 | | 0,260 |

AISI 304-1.4301

| Art.-Nr. | Preis | Art.-Nr. | Preis |
|----------|-------|----------|-------|
| poliert | EUR | matt | EUR |
| -0101 | (+) | -0102 | (+) |
| -0151 | (+) | -0152 | (+) |
| -0201 | (+) | -0202 | (+) |
| -0251 | 6,65 | -0252 | 6,65 |
| -0321 | 7,40 | -0322 | 7,40 |
| -0401 | 8,35 | -0402 | 8,35 |
| -0501 | 9,10 | -0502 | 9,10 |
| -0651 | 10,15 | -0652 | 10,15 |
| -0801 | 15,60 | -0802 | 15,60 |
| -1001 | 19,40 | -1002 | 19,40 |
| -1251 | 22,45 | -1252 | 22,45 |
| -1501 | 29,65 | -1502 | 29,65 |

(+) Preis auf Anfrage

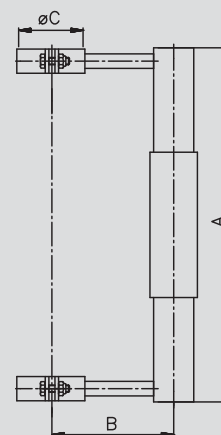
(+) price on inquiry

7.09 Rohrschlitten
7.09 pipe holder slide-type
Art.-Nr. 73300-

| DN | A | B | C | D | E | Gew. |
|-----|-------|-------|-------|----|----|-------|
| mm | mm | mm | mm | mm | mm | kg |
| 25 | 200,0 | 87,0 | 28,0 | | | 0,740 |
| 32 | 200,0 | 90,0 | 34,0 | | | 0,750 |
| 40 | 200,0 | 93,0 | 40,0 | | | 0,780 |
| 50 | 200,0 | 99,0 | 52,0 | | | 0,820 |
| 65 | 200,0 | 108,0 | 70,0 | | | 0,900 |
| 80 | 200,0 | 115,0 | 85,0 | | | 1,000 |
| 100 | 200,0 | 125,0 | 104,0 | | | 1,100 |

AISI 304-1.4301

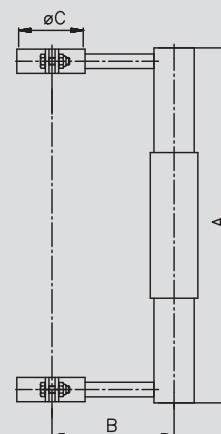
| Art.-Nr. | Preis | Art.-Nr. | Preis |
|----------|-------|----------|-------|
| poliert | EUR | matt | EUR |
| -0251 | (+) | -0252 | (+) |
| -0321 | (+) | -0322 | (+) |
| -0401 | (+) | -0402 | (+) |
| -0501 | (+) | -0502 | (+) |
| -0651 | (+) | -0652 | (+) |
| -0801 | (+) | -0802 | (+) |
| -1001 | (+) | -1002 | (+) |

Rohrschlitten DIN
pipe holder slide-type DIN

Art.-Nr. 73301-

| DN | A | B | C | D | E | Gew. |
|------|-------|-------|-------|----|----|-------|
| mm | mm | mm | mm | mm | mm | kg |
| 1" | 200,0 | 87,0 | 25,4 | | | 0,740 |
| 1,5" | 200,0 | 93,0 | 38,1 | | | 0,750 |
| 2" | 200,0 | 99,0 | 50,8 | | | 0,820 |
| 2,5" | 200,0 | 108,0 | 63,5 | | | 0,900 |
| 3" | 200,0 | 115,0 | 76,1 | | | 1,000 |
| 4" | 200,0 | 125,0 | 101,6 | | | 1,100 |

AISI 304-1.4301

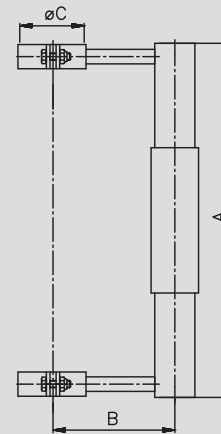
| Art.-Nr. | Preis | Art.-Nr. | Preis |
|----------|-------|----------|-------|
| poliert | EUR | matt | EUR |
| -1001 | (+) | -1002 | (+) |
| -1121 | (+) | -1122 | (+) |
| -2001 | (+) | -2002 | (+) |
| -2121 | (+) | -2122 | (+) |
| -3001 | (+) | -3002 | (+) |
| -4001 | (+) | -4002 | (+) |

Rohrschlitten Zoll
pipe holder slide-type inch

Art.-Nr. 73308-

| DN | A | B | C | D | E | Gew. |
|-------|-------|-------|-------|----|----|-------|
| mm | mm | mm | mm | mm | mm | kg |
| 33,7 | 200,0 | 87,0 | 33,7 | | | 0,740 |
| 42,4 | 200,0 | 90,0 | 42,4 | | | 0,750 |
| 48,3 | 200,0 | 93,0 | 48,3 | | | 0,780 |
| 60,3 | 200,0 | 99,0 | 60,3 | | | 0,820 |
| 76,1 | 200,0 | 108,0 | 76,1 | | | 0,900 |
| 88,9 | 200,0 | 115,0 | 88,9 | | | 1,000 |
| 114,3 | 200,0 | 125,0 | 114,3 | | | 1,100 |

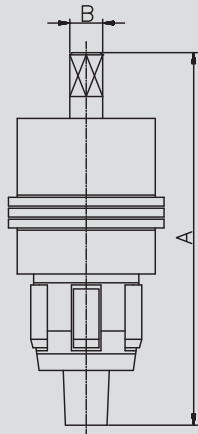
AISI 304-1.4301

| Art.-Nr. | Preis | Art.-Nr. | Preis |
|----------|-------|----------|-------|
| poliert | EUR | matt | EUR |
| -0251 | (+) | -0252 | (+) |
| -0321 | (+) | -0322 | (+) |
| -0401 | (+) | -0402 | (+) |
| -0501 | (+) | -0502 | (+) |
| -0651 | (+) | -0652 | (+) |
| -0801 | (+) | -0802 | (+) |
| -1001 | (+) | -1002 | (+) |

Rohrschlitten ISO
pipe holder slide-type ISO


(+) Preis auf Anfrage

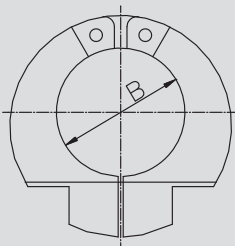
(+) price on inquiry

7.10 Werkzeug
7.10 tool
Rohrwalze DIN/Zoll
Art.-Nr. 7380-
**pipe expander
DIN/inch**


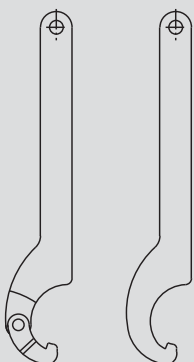
| DN | A mm | B mm | C mm | D mm | E mm | Gew. kg | Art.-Nr. | Preis EUR |
|------|---------|---------|---------|---------|---------|------------|----------|--------------|
| 10 | 118,0 | 8,0 | | | | 0,310 | -00100 | 195,60 |
| 15 | 129,0 | 8,0 | | | | 0,330 | -00150 | 195,60 |
| 20 | 140,0 | 8,0 | | | | 0,360 | -00200 | 195,60 |
| 25 | 159,0 | 12,0 | | | | 0,670 | -00250 | 250,50 |
| 32 | 171,0 | 12,0 | | | | 1,030 | -00320 | 250,50 |
| 40 | 176,0 | 14,0 | | | | 1,430 | -00400 | 264,20 |
| 50 | 180,0 | 14,0 | | | | 2,280 | -00500 | 301,95 |
| 65 | 205,0 | 16,0 | | | | 4,250 | -00650 | 418,60 |
| 80 | 238,0 | 22,0 | | | | 7,900 | -00800 | 504,35 |
| 100 | 240,0 | 22,0 | | | | 0,500 | -01000 | 713,65 |
| 1" | 159,0 | 12,0 | | | | 0,670 | -11000 | 250,50 |
| 1,5" | 176,0 | 14,0 | | | | 1,430 | -11120 | 264,20 |
| 2" | 180,0 | 14,0 | | | | 2,280 | -12000 | 301,95 |
| 2,5" | 205,0 | 16,0 | | | | 4,250 | -12120 | 418,60 |
| 3" | 238,0 | 22,0 | | | | 7,900 | -13000 | 452,90 |
| 4" | 240,0 | 22,0 | | | | 10,500 | -14000 | 713,65 |

Knarre separat lieferbar

ratchet could be delivered separately

**Rohrsägewerkzeug
DIN/Zoll**
Art.-Nr. 7400-
**pipe sawing tool
DIN/inch**


| DN | A mm | B mm | C mm | D mm | E mm | Gew. kg | Art.-Nr. | Preis EUR |
|------|---------|---------|---------|---------|---------|------------|----------|--------------|
| 10 | | 12,0 | | | | 0,570 | -00100 | 113,20 |
| 15 | | 18,0 | | | | 0,550 | -00150 | 113,20 |
| 20 | | 22,0 | | | | 0,530 | -00200 | 113,20 |
| 25 | | 28,0 | | | | 0,710 | -00250 | 114,30 |
| 32 | | 34,0 | | | | 0,640 | -00320 | 114,30 |
| 40 | | 40,0 | | | | 0,830 | -00400 | 123,20 |
| 50 | | 52,0 | | | | 0,980 | -00500 | 133,75 |
| 65 | | 70,0 | | | | 1,940 | -00650 | 201,55 |
| 80 | | 85,0 | | | | 2,150 | -00800 | 283,40 |
| 100 | | 104,0 | | | | 2,690 | -01000 | 336,10 |
| 1" | | 25,4 | | | | 0,750 | -11000 | 114,10 |
| 1,5" | | 38,1 | | | | 0,830 | -11120 | 118,40 |
| 2" | | 50,8 | | | | 0,980 | -12000 | 127,85 |
| 2,5" | | 63,5 | | | | 1,940 | -12120 | 201,55 |
| 3" | | 76,2 | | | | 2,150 | -13000 | 283,40 |
| 4" | | 101,6 | | | | 2,690 | -14000 | 336,45 |

Hakenschlüssel
Art.-Nr. 750-
spanner


| DN | A mm | B mm | C mm | D mm | E mm | Gew. kg | AISI 304-1.4301/stahlvernicket* | |
|--|---------|---------|---------|---------|------------|------------|---------------------------------|--------------|
| | | | | | | | Art.-Nr. | Preis EUR |
| 10-20 mit Gelenk* | | | | | Typ35/60 | 0,090 | -000100020 | 24,40 |
| 25-40 mit Gelenk* | | | | | Typ60/90 | 0,290 | -000250040 | 27,55 |
| 50-100 mit Gelenk* | | | | | Typ90/155 | 0,430 | -000500100 | 33,75 |
| 125-150 mit Gelenk* | | | | | Typ155/230 | 0,580 | -001250150 | 60,00 |
| 25-50 starre Ausführung aus Edelstahl | | | | | | 0,296 | -100251050 | 25,90 |
| 65-100 starre Ausführung aus Edelstahl | | | | | | 0,435 | -100651100 | 39,70 |



Armaturen GmbH

fon + 49 (0) 44 65 8 07 0
fax + 49 (0) 44 65 8 07 40



Armaturen GmbH

Armaturen, Rohre, Sonderteile aus Edelstahl
fittings, pipes, special parts of stainless steel

Industriestraße 24 - 26 · D-26446 Friedeburg

fon + 49 (0) 44 65 8 07 0 · fax + 49 (0) 44 65 8 07 40

mail: info@ms-armaturen.de · <http://www.ms-armaturen.de>